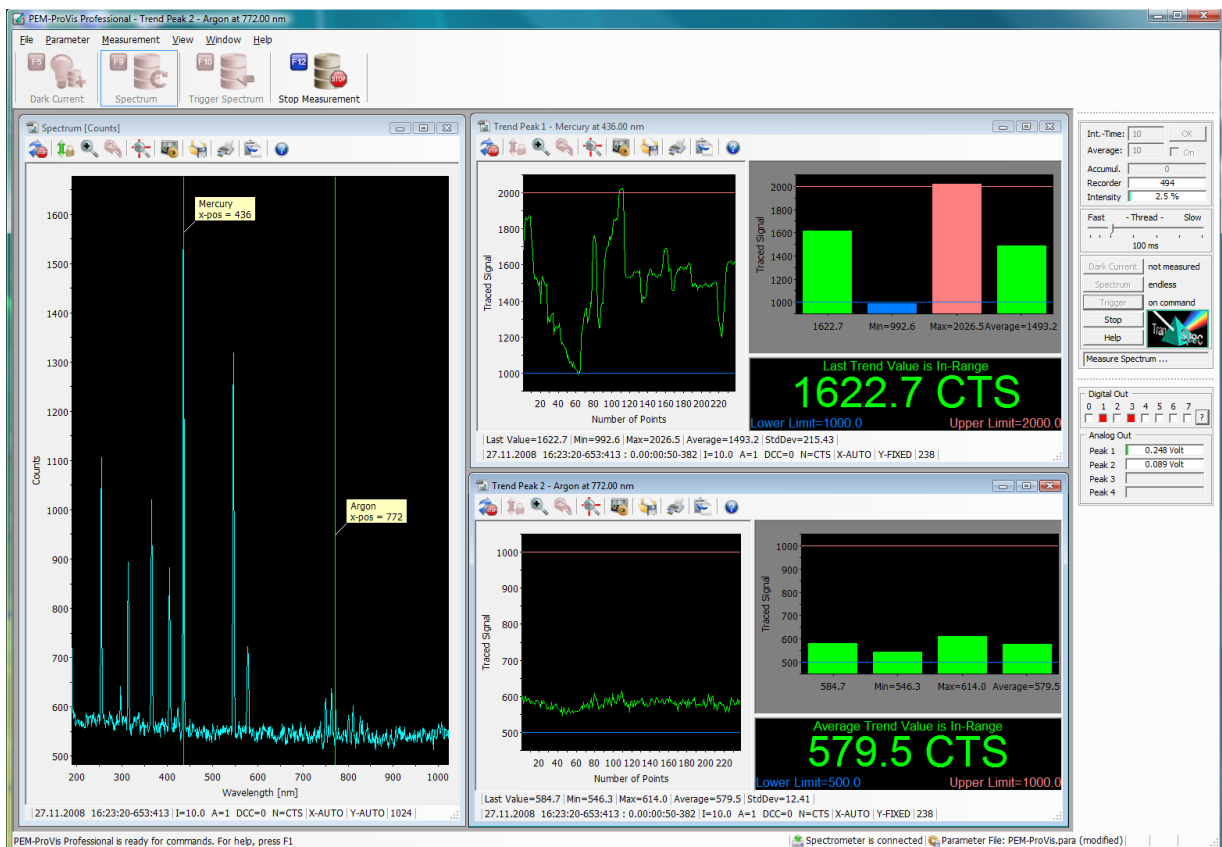




PEM-ProVis Professional

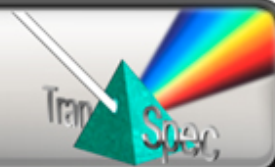
Software for Plasma Emission Measurement

PEM-ProVis Professional is an easy-to-use and convenient Windows software package for optical plasma emission measurements running on our fiber optics coupled Transpec process spectrometer. The software permits to simultaneously trace up to 4 emission peaks at any wavelength selectable in the spectral range of approximately 190 nm to 1000 nm. The captured emission spectrum and emission trend values to trace are viewed real-time in different charts ("plasma monitoring"). At the same time, the emissions trend values and certain measurement status information is reported to digital and analog out-ports, which permits a closed-loop measurement setup ("plasma controlling").



Exemplary screenshot of PEM-ProVis Professional

Technical specifications on next page ►



PEM-ProVis Professional Software • Technical Specifications

April 2016, related to version 1.2, without guarantee, subject to changes

Minimum Hardware and Software Requirements

- PC/Laptop with Intel Dual-Core (2 GHz or higher recommended)
- 32-bit version for Windows XP / Vista / 7 - fully native 64-bit version for Windows 7
- CD/DVD drive for installation
- Graphics adapter with at least 1024 x 768 pixel, 1280 x 1024 pixel (or full-HD) is recommended
- TranSpec spectrometer (USB 2.0/ 3.0 required, optionally Ethernet adapter)

General Description

- Multi-Threaded and Multiple Document Interface handling
- Shell registration for drag-and-drop of FTM-ProVis Professional document files
- Minimum requirement of resource and memory
- Programmed in Visual C++ by use of the Microsoft Foundation Classes (MFC)
- Consideration of the Microsoft Application Design Guide: menu toolbar, status bar, tool tips, HTML on-line help
- Fully supports Windows themes and multi-monitor use
- Software documentation as detailed, color printed user's manual with many examples

Various Options for Measurement and Visualization

- Performs manually or fully automatic triggered measurement runs, trigger by timer or TTL input
- Optionally high speed and lossless spectra burst mode into TranSpec local memory buffer
- Optionally separate TTL-out port on TranSpec for trigger-out of burst mode start/stop
- Supports 8-channel digital out for reporting measurement status information and emission trace high/low limits
- Supports 4-channel analog out (unipolar 0-10 volt) for reporting emission trace values
- User extendable x-axis line lists for labeling emission peaks of e.g. chemical elements in spectrum charts
- Real-time representation of emission spectrum during measurement
- Real-time representation of up to 4 emission trace results as trend and bar chart
- Logs up to 62,500 emission trace results to read-shared text files, accessible during measurement
- Logs up to 62,500 emission spectra as Spectra-Recorder, which permits a subsequent off-line re-evaluation
- Data export of Spectra-Recorder contents as tabulated text file
- Saves all your parameter settings into individual parameter files, password protection possible
- Quick access to last used parameter and Spectra-Recorder files

Note **TranSpec** is a registered German trademark of Dipl.-Ing. (FH) Th. Fuchs, Engineer's Office for Applied Spectroscopy. All other mentioned product names are or possibly might be trademarks or registered trademarks of their owners.